

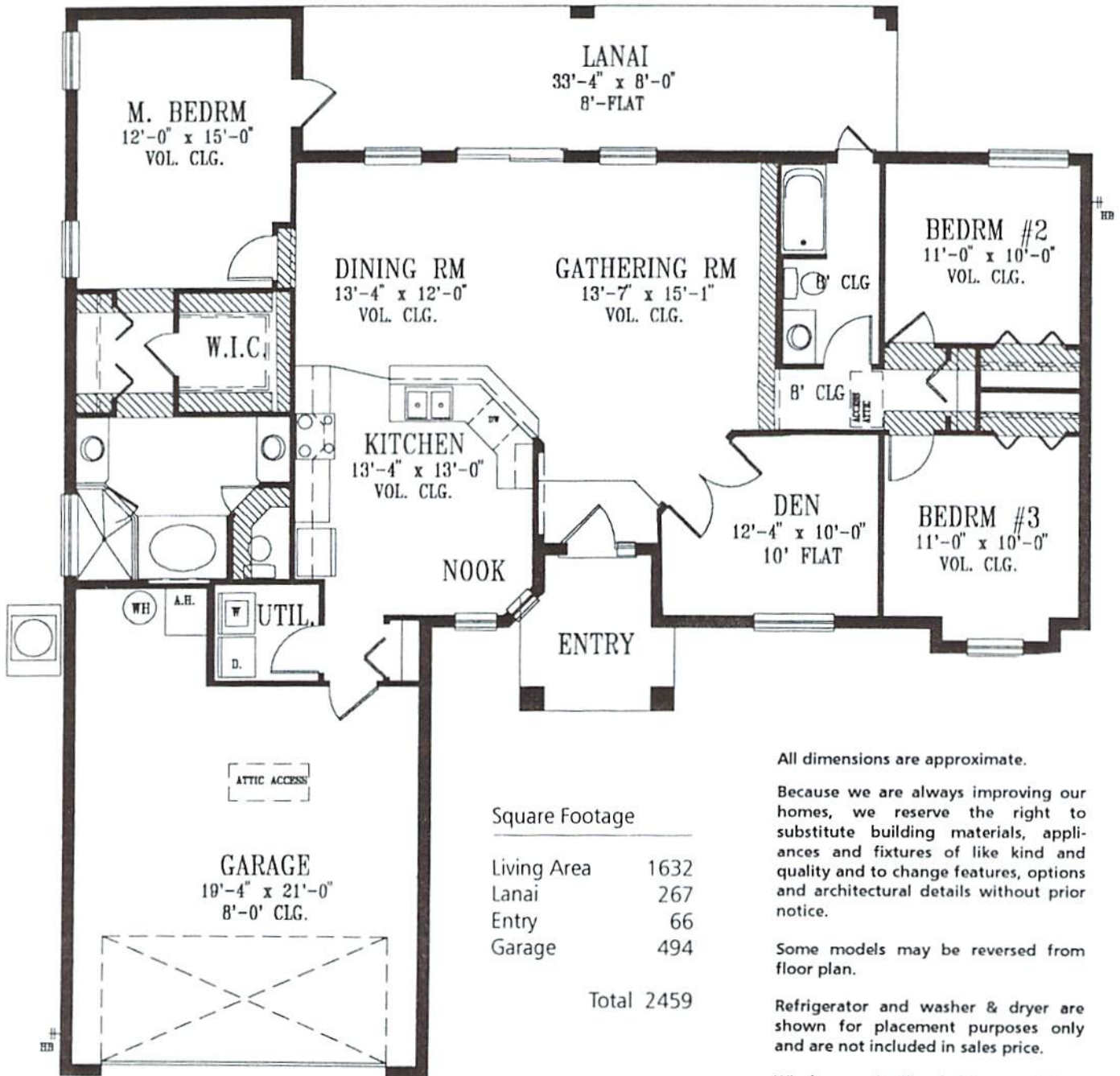


# The Lido

Model 1632

3 bedroom + den - 2 bath

# Greater Groves



### Square Footage

|             |      |
|-------------|------|
| Living Area | 1632 |
| Lanai       | 267  |
| Entry       | 66   |
| Garage      | 494  |

Total 2459

All dimensions are approximate.

Because we are always improving our homes, we reserve the right to substitute building materials, appliances and fixtures of like kind and quality and to change features, options and architectural details without prior notice.

Some models may be reversed from floor plan.

Refrigerator and washer & dryer are shown for placement purposes only and are not included in sales price.

Windows and ceiling height may differ by elevation.

Property of Karyn Smith

[www.CelebrationAgent.com](http://www.CelebrationAgent.com)